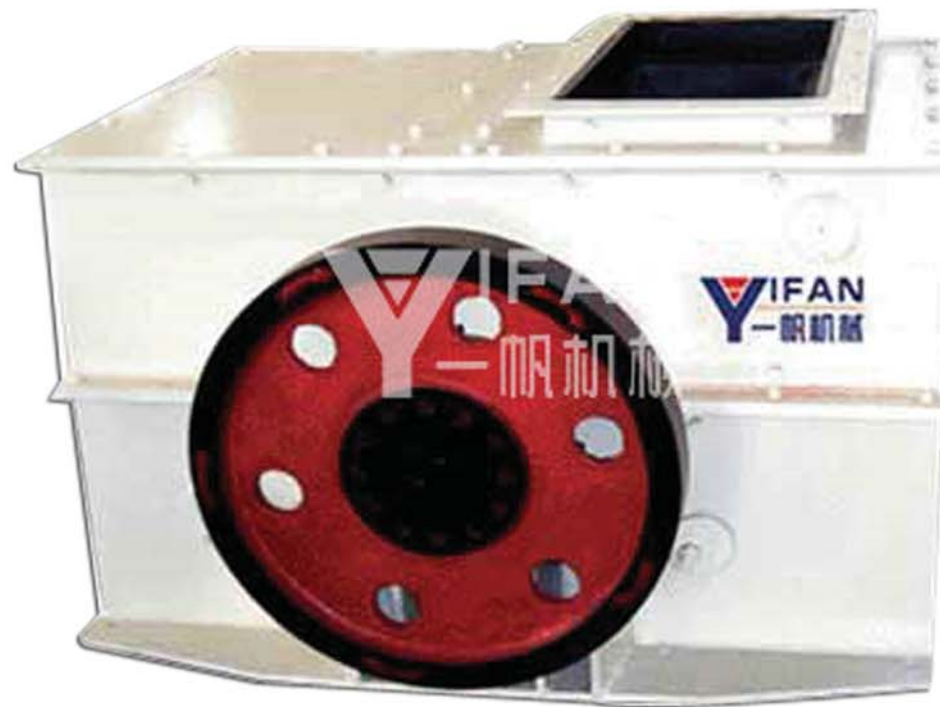


YIFAN



PCH Series Ring Hammer Crusher

Leading crushing and screening equipment manufacturer in China

Zhengzhou YiFan Machinery Co.,Ltd(the share-holder is Shande Technology (Beijing) Co., Ltd) has its headquarter in Beijing. It is a famous manufacturer of crushing and screening equipment and provides series stone crusher and crushing equipment for customers.



YIFAN

ZHENGZHOU YIFAN MACHINERY CO.,LTD

Tel:+86 371 64628852 Web : www.yfcrusher.com Add : Zhengyuan Rd, Xingyang, Zhengzhou Henan 450100, China

Ring hammer crusher is the use of its high-speed rotating hammer crusher and material collision crushing materials. It has the features of simple structure, big crushing ratio and high production efficiency etc. It is divided into dry and wet crushing. It is suitable to crusher brittle materials, the compressive strength of material does not surpass 100MPa; the moisture content does not surpass 15%. Hammer crusher not only is used in crushing production line, sand production line, but also can replace cone crusher in mineral processing production line.

The application of ring hammer crusher:

PCH ring hammer crusher is most suitable to crusher every brittle materials, like coal, gangue, coke, slag, red sandstone, shale, loose limestone, etc. The compressive strength of the material does not surpass 100MPa; it can adjust the grate of the gap according to the requirements of users.

The Structure of Ring Hammer Crusher:

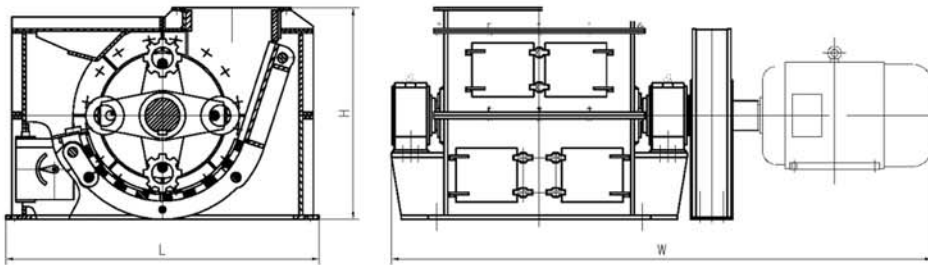
The main working parts of ring hammer crusher is the rotor with a hammer. Rotor from the spindle, disk, pin and hammer. The motor drives the rotor in the crushing cavity high-speed rotation. Material from the upper to the mouth to feed into the machine, high-speed movement of the hammer blow, impact, shearing, abrasive and grinding.

The main working parts of ring hammer crusher is the rotor with a hammer, the rotor is consist of main shaft, disk, pin roll and hammer..

Technical Data

型号	Model	PCH-0402	PCH-0404	PCH-0604	PCH-0606	PCH-0808	PCH-1010	PCH-1016	PCH-1216	PCH-1221
转子规格(转子直径)	Rotor(diameter x length mm)	400 x 200	400 x 400	600 x 400	600 x 600	800 x 800	1000 x 1000	1000 x 1600	1200 x 1600	1210 x 2100
转子转速	Speed of Rotor(r/min)	960	970	970	980	740	740	740	740	740
最大进料粒度	Max Feed Size(mm)	200	200	200	200	200	300	300	400	400
出料粒度	Discharge Size(mm)	<30	<30	<30	<30	<30	<30	<30	<30	<30
产量	Capacity(t/h)	8-12	16-25	22-33	30-60	75-105	160-200 200-245	300-350 400-500	500-620 620-800	800-1000
电机型号	Motor Model	Y132M2-6	Y160L-6	Y180L-6	Y225M-6	Y280M-8	Y315M2-8 Y315M3-8	Y312-8 Y400-8	Y400-8 Y450-8	Y450-8
电机功率	Motor Power (kw)	5.5	11	15	30	45	90 110	155 220	280 355	450(400)
电机电压	Motor Voltage (v)	380	380	380	380	380	380 6000	380 6000	6000	6000
电机重量	Motor Weight(kg)	100	150	170	360	600	1100 1200	1600 3100	3600 4100	4300
外型尺寸	Overall Dimension(L*W*H)(mm)	800 x 880 x 560	960 x 880 x 570	1030 x 1270 x 800	1350 x 1270 x 820	1750 x 1620 x 1080	2100 x 2000 x 1340	2700 x 2000 x 1350	3100 x 2800 x 1750	3620 x 3350 x 1950
总重量 (不含电机)	Weight (exclude motor)(kg)	800	1050	1430	1770	3600	6100	9200	15000	24000

Note: The discharged material size can be chosen willfully within the 0-60mm scope. When it is below 15mm, the output should be 60% of the tabulation data; while it is 3mm, the material moisture does not surpass 10%, the output should be 30% of the tabulation data.



SHANDE TECHNOLOGY (BEIJING) CO.,LTD.
Headoffice Add: Rm422,Nanpeilou Jianshebu,No.11
Sanlihe Rd,Beijing, China
Tel: 010-57811256
Fax: 010-57811257

ZHENGZHOU YIFAN MACHINERY CO., LTD.
Factory Add: Zhengyuan Rd, Xinyang, Zhengzhou Henan
Zip Code: 450100
Tel: +86 371 64628852
Fax: +86 371 64628872
Web: www.yfcrusher.com
E-mail:yifan@yfmac.com

YIFAN